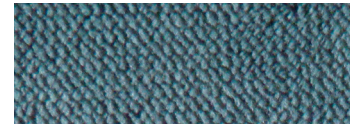


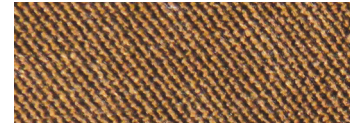


Shown in Coffee Bean\*

### Standard Fabrics:



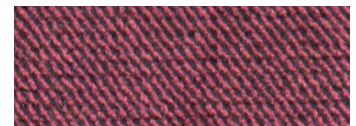
Calypso



Copper



Hazelnut



Shiraz



Sterling

This fabric stands out for its comfort, smooth texture, and rich color options. It features our exclusive SofTouch™ with Stain Defense coating.

\* An upcharge will apply for all crossover fabrics.

## Cloud PR510



*Comfort Zone*<sup>™</sup>  
by GOLDEN

The Cloud™ by Golden is an extremely comfortable and popular power lift recliner featuring hybrid sizing. Offered in two sizes, these chairs offer our unique, ergonomic Cloud seating system and custom bucket seat design for long-term comfort and support. They feature a plush backrest and solid molded high-density arm pillows for the ultimate in relaxation. So, if you're looking for a lift chair to spend most of your day and night in, or a recliner chair that will rejuvenate you after a long day at work, look no further than the MaxiComfort Cloud!

### Standard Features:

- Patented MaxiComfort® Positioning
- Programmable AutoDrive™ Hand Control
- Custom Bucket Seat
- Extra Pocket

Mountain View Medical Supply  
5076 W. 58th Ave.  
Arvada, CO 80002  
303-455-1300 or 800-873-7121  
MVMSinc.com



# MAXICOMFORT® Series PR510

Model Number	PR510-SME	PR510-MLA
Size	Small/Med	Med/Large
Weight Capacity	375 LBS	375 LBS
Positioning	MaxiComfort	MaxiComfort
Comfort Zone(s)	2	2
Twilight Technology	NO	NO
Chaise Seat	YES	YES
Pocketed Coil Seat	NO	NO
Back Type	Biscuit	Biscuit
Removable Back Option	NO	NO
Head Rest Cover	YES	YES
Arm Rest Covers	NO	NO
Overall Width	33.5"	38"
Overall Height	41"	45"
Width Between Arms	18.5"	20"
Floor to Top of Seat	19"	20"
Seat Depth	19.5"	21.5"
Seat to Top of Back	27"	29"
Seat to Top of Arm	7.5"	7"
Distance Required from Wall Reclined	23"	24"
Extension reclined from Back of Seat to End of Foot Rest	43"	44"
Life Time Warranty, Chair Frame, Lift Frame, Recline Mechanism	YES	YES
Warranty on Electrical Parts	3 YR	3 YR
Pro Rated Years 4 Thru 7	YES	YES
Warranty on Mechanical Labor	3 YR	3 YR
Warranty on Electrical Labor	1 YR	1 YR
Hand Control Routing	Inside Pocket	Inside Pocket
Extra Pocket Option	Standard	Standard
Heat & Massage Option	YES	YES
Articulating Headrest Option	NO	NO
Adjustable Lumbar Option	NO	NO
AutoFlex Option	NO	YES
Foot Rest Extension Option	NO	NO
Straight Lift Option	YES	YES
USB Charging Port	NO	NO
Battery Backup	YES	YES
Place of Origin	USA	USA

SmartTek Diagnostic System STANDARD on all Golden models.



**Upgrade with  
Deluxe Therapeutic  
Heat & Massage!**

**Mountain View Medical Supply**  
5076 W. 58th Ave. Arvada, CO 80002  
303-455-1300 800-873-7121 MVMSinc.com



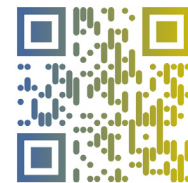
Shown in Calypso

## Comfort Zone™ by GOLDEN

**Comfort Zones 1 & 2** work together to create individualized wellness positioning and comfort. Each Comfort Zone can be adjusted independently by using the exclusive AutoDrive hand control.



**WE PATENTED COMFORT™**



Scan with your smartphone camera to learn more about Comfort Zone by Golden.



Phone: 800-624-6374  
Fax: 800-628-5165  
www.goldentech.com



Literature is current at time of printing. Golden Technologies reserves the right to make changes to the product or literature at any time.

Sizes may vary depending on fabric, filling material, upholstery and carpet thickness. All measurements taken on concrete floor using levels and metal rulers.



Complies with  
UL 73 and  
CSA C22.2 No. 68



www.facebook.com/goldentechnologies

SHT-PR510-111021