

MAXICOMFORT® SERIES

Mountain View Medical Supply  
5076 W. 58th Ave. Arvada, CO 80002  
303-455-1300 or 800-873-7121  
MVMSinc.com



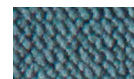
MaxiComfort with  
Twilight Positioning  
PR515-MLA

**Now with  
Power Headrest  
& Power Lumbar  
STANDARD!**

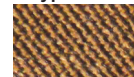
**Available in  
TWO sizes!**



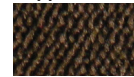
**PR-515-SME  
FABRICS**



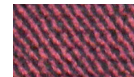
Calypso



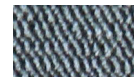
Copper



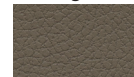
Hazelnut



Shiraz

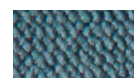


Sterling



BrisaShiitake\*

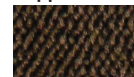
**PR-515-MLA  
FABRICS**



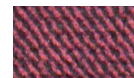
Calypso



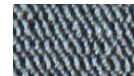
Copper



Hazelnut



Shiraz



Sterling



Brisa Coffee Bean



Brisa Shiitake\*

\* upcharge applies

  
**TWILIGHT**



**PR515** Introducing the next generation of wellness positioning! The new PR515 is available in two sizes and comes standard with our PowerPillow™ and power lumbar support for even more comfort and positioning options. This luxurious power lift recliner features two incredible patents combining our extremely popular MaxiComfort Cloud™ positioning and Twilight Technology that provide superior comfort and quality found only at Golden. Achieve extreme Zero Gravity and TV positions while enjoying the world's finest rejuvenating seating experience!

 **GOLDEN**

**PROUDLY MADE  
BY AMERICANS**  
with Domestic & Imported Materials

Model Number	PR515-SME	PR515-MLA
Size	Small/Med	Med/Large
Weight Capacity	375 LB	375 LB
Positioning	MaxiComfort	MaxiComfort
Twilight Technology	Yes	Yes
Chaise Seat	Yes	Yes
Pocketed Coil Seat	No	No
Back Type	Biscuit	Biscuit
Removable Back Option	No	No
Head Rest Cover	Yes	Yes
Arm Rest Covers	No	No
Overall Width	35.5"	39.5"
Overall Height	44"	46.5"
Width Between Arms	20"	20"
Floor to Top of Seat	20"	21.5"
Seat Depth	18.5"	20"
Seat to Top of Back	28"	31"
Seat to Top of Arm	7.5"	8.5"
Distance Required from Wall Reclined	23"	24"
Extension Reclined from Back of Seat to End of Foot Rest	43"	43"
Life Time Warranty, Chair Frame, Lift Frame, Recline Mechanism	Yes	Yes
Warranty on Electrical parts	3 YR	3 YR
Pro Rated Years 4 Thru 7	Yes	Yes
Warranty on Mechanical Labor	3 YR	3 YR
Warranty on Electrical Labor	1 YR	1 YR
Customizable *	No	No
Hand Control Routing	Inside Arm	Inside Arm
Extra Pocket Option	Standard	Standard
Heat & Massage Option	No	No
Power Pillow Option	Standard	Standard
Power Adjustable Lumbar Option	Standard	Standard
Auto Flex Option	No	No
Foot Rest Extension Option	No	No
Straight Lift Option	No	No
USB Charging Port	Yes	Yes
Place of Origin	USA	USA

\* See Customize Chart for Dimension limits  
 Sizes may vary depending on fabric, filling material, upholstery and carpet thickness. All measurements taken on concrete floor using levels and metal rulers.



### Smart Tek

Our luxurious lift and recline chairs are equipped with electronics to help assure a secure lift every time you need it.

### Battery Backup System

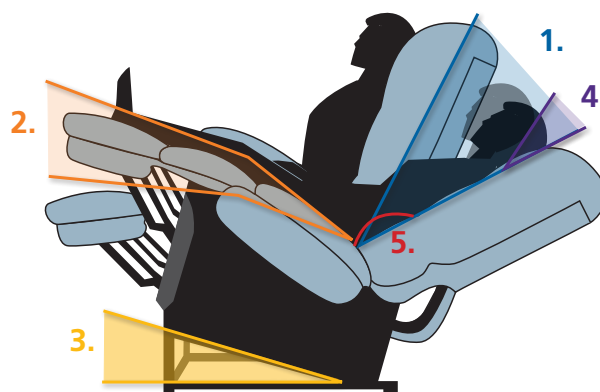
Batteries not included. Battery Backup System is designed to bring the chair from the reclined to the seated position in the event of a power outage.



# TWILIGHT

## The World's Most Advanced Power Positioning Lift Recliner!

Our Patented Twilight Technology Now in a Unique 5-Motor System to Achieve Optimum Support



#### Motor #1

Adjusts back positioning

#### Motor #2

Controls the footrest movement and the patented movement of the rising seat box

#### Motor #3

Activates Twilight technology, a tilting movement that provides a weightless experience

#### NEW! Motor #4

Adjusts head support and placement.

#### NEW! Motor #5

Provides customizable lumbar support.

### HEALTHY BENEFITS:

- Elevates Feet Above Heart
- Alleviates Pressure On Lungs
- Distributes Weight
- Relieves Pressure Points
- Encourages Proper Posture
- Supports Natural 'S' Shape of Spine
- Stylish New Track Arm Design
- Available in Luxurious Brisa Fabrics With Breathable Technology



Up



TV



TV in Twilight



Lounge in Twilight



Lounge Reclined in Twilight



Zero Gravity



Zero Gravity in Twilight



Trendelenburg

Literature is current at time of printing. Golden Technologies reserves the right to make changes to the product or literature at any time.



Complies with  
UL 73 and  
CSA C22.2 No. 68



Golden Technologies • 401 Bridge Street, Old Forge PA 18518 • Tel: (800) 624-6374 • Fax: (800) 628-5165 • [www.goldentech.com](http://www.goldentech.com)

SHT-PR515-100120