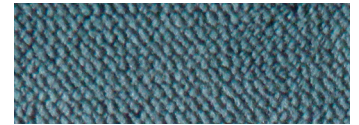




Shown in Shiitake*

Standard Fabrics:



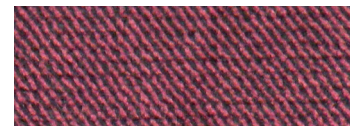
Calypso



Copper



Hazelnut



Shiraz



Sterling

This fabric stands out for its comfort, smooth texture, and rich color options. It features our exclusive SofTouch™ with Stain Defense coating.

* An upcharge will apply for all crossover fabrics.

EZ Sleeper PR761



Comfort Zone™
by GOLDEN

The EZ Sleeper is a luxury power lift recliner featuring a modern look with a tailored back and stylish track arm design, while the plush chaise pad and pocketed coil spring seat provide hours of unmatched comfort. Positioning options are endless with our 5-zone positioning system, which includes our patented Twilight Technology, patented MaxiComfort® Positioning, adjustable headrest and lumbar support. Healthy benefits include being able to elevate the feet above the heart while experiencing a feeling of weightlessness.

Mountain View Medical Supply
5076 W. 58th Ave.
Arvada, CO 80002
303-455-1300 or 800-873-7121
MVMSinc.com



The EZ Sleeper

Standard Features:

- Patented Twilight Tilt Technology
- Patented MaxiComfort® Positioning
- Adjustable Headrest
- Adjustable Lumbar
- Programmable AutoDrive™ Hand Control
- USB Charging Port
- Extra Pocket

NEW!

**Heat & Massage
Option Available**

**MAXICOMFORT® Series
PR761**

Model Number	PR761-MLA
Size	Medium/Large
Weight Capacity	375 LBS
Positioning	Maxicomfort
Comfort Zone(s)	5
Twilight Technology	YES
Chaise Seat	YES
Pocketed Coil Seat	YES
Back Type	Seam
Removable Back Type	Quick Release
Head Rest Cover	NO
Arm Rest Covers	NO
Overall Width	34"
Overall Height	46"
Width Between Arms	22"
Floor to Top of Seat	21"
Seat Depth	21"
Seat to Top of Back	30"
Seat to Top of Arm	8"
Distance Required from Wall Reclined	24"
Extension Reclined from Back of Seat to End of Foot Rest	43"
Life Time Warranty, Chair Frame, Lift Frame, Recline Mechanism	YES
Warranty on Electrical parts	3 YR
Pro Rated Years 4 Thru 7	YES
Warranty on Mechanical Labor	3 YR
Warranty on Electrical Labor	1 YR
Hand Control Routing	Inside Arm
Extra Pocket Option	Standard
Heat & Massage Option	YES
HeatWave Technology	NO
Articulating Headrest Option	Standard
Adjustable Lumbar Option	Standard
AutoFlex Option	NO
Foot Rest Extension Option	NO
Straight Lift Option	NO
USB Charging Port	Control Box
Battery Backup	YES
Place of Origin	USA

SmartTek Diagnostic System STANDARD on all Golden models.


TWILIGHT

**The World's Most Advanced
Power Positioning Lift Recliner
with Patented Twilight Technology!**



Shown in Hazelnut



MVMSinc.com

HEALTHY BENEFITS:

- Elevates Feet Above Heart
- Supports Natural 'S' Shape of Spine
- Alleviates Pressure On Lungs
- Stylish New Track Arm Design
- Distributes Weight
- Available in Luxurious Brisa® Fabrics With Breathable Technology
- Relieves Pressure Points
- Encourages Proper Posture

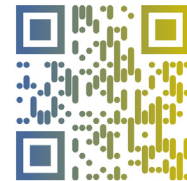
Comfort Zone™
by GOLDEN

Comfort Zones 1 - 5 This positioning system incorporates all five adjustable comfort zones to create the ultimate wellness comfort experience with our patented Twilight Technology. Each Comfort Zone can be adjusted independently by using the exclusive AutoDrive™ hand control.



WE PATENTED COMFORT™

Mountain View Medical Supply
5076 W. 58th Ave., Arvada, CO 80002
303-455-1300



Scan with your smartphone camera to learn more about Comfort Zone by Golden.



Phone: 800-624-6374
Fax: 800-628-5165
www.goldentech.com



Literature is current at time of printing. Golden Technologies reserves the right to make changes to the product or literature at any time.

Sizes may vary depending on fabric, filling material, upholstery and carpet thickness. All measurements taken on concrete floor using levels and metal rulers.



Complies with UL 73 and CSA C22.2 No. 68



Find us on Facebook
www.facebook.com/goldentechnologies

SHT-PR761-122922